

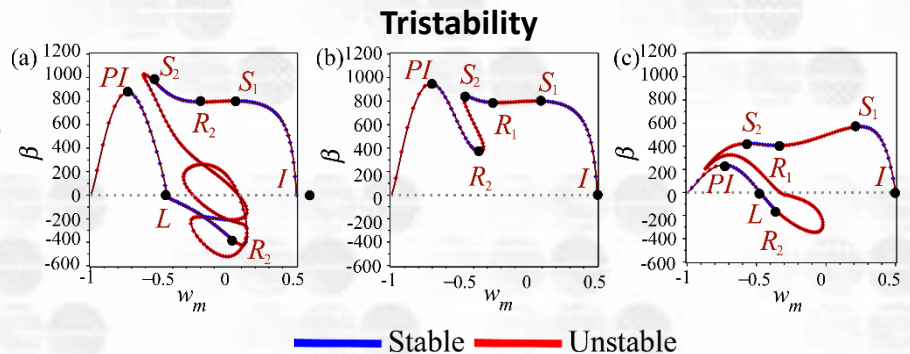
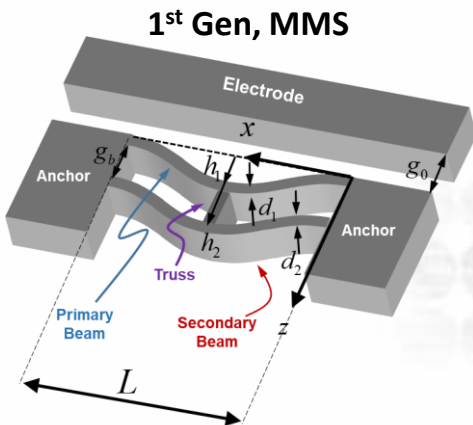
The Smart Structures Laboratory is growing!

Do you want to be a part of the next *computing revolution*?

Do you want to be a part of a new and *exciting research at the bleeding edge of the frontier* that can change the world?

Do you want to *advance humanity*? Are you a curious person?

If so, then we are seeking **outstanding MSc and PhD students, as well as postdocs for the group**. We study fundamental properties of a new class of structures dubbed as micro-meta-structures (MMS), characterised by repeating unit sub-structures that are coupled together. This new type of structures is an emerging field with applications ranging from multi-stable MEMS to broadband energy harvesting, mechanical computing, edge computation, authentication and encryption devices.



The research is aiming towards the following applications:

- Multivalued non-volatile mechanical memories and MEMS-based sensors
- Multivalued authentication devices
- Multistable, broadband micro-energy harvesters
- Multivalued random number generators
- Mechanical (and multivalued and cascadable) logical gates
- Mechanical computing

For further details and enquiries, contact Dr. Lior Medina at medina@tau.ac.il

