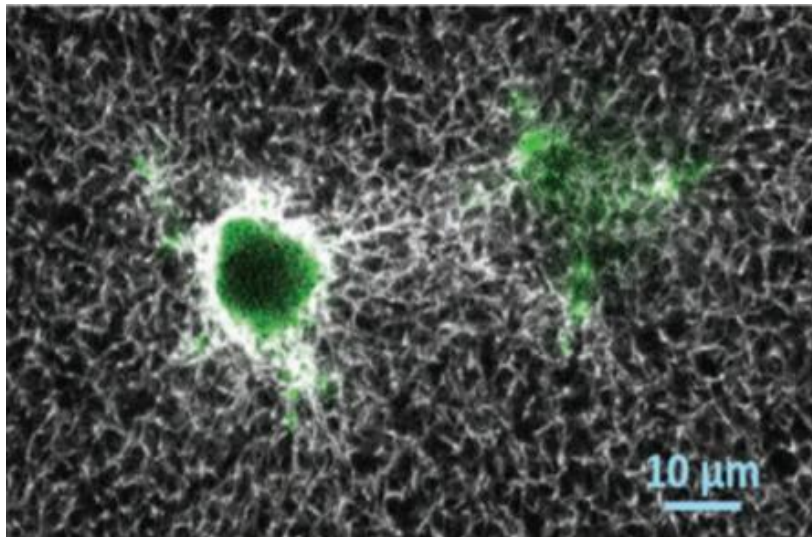


Research Project

Ayelet Lesman Lab- Biomechanics and Tissue Engineering Biochemical Transport of Molecules in Fibrin Gel

By Almog Greenberg



Cells mechanically remodel the fibrous environment
by forming a band of dense matrix between them

- Active participation in research
- Solving research challenges
- Construction of an experimental system
and its implementation