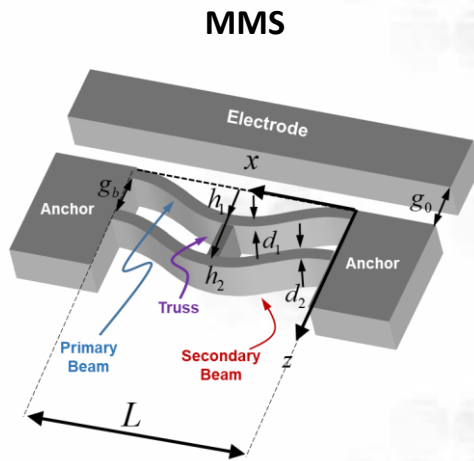
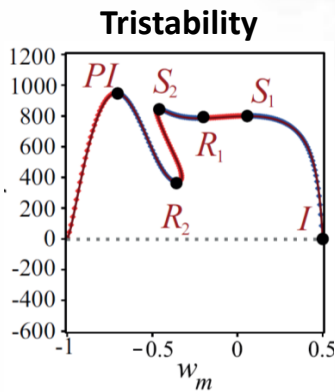
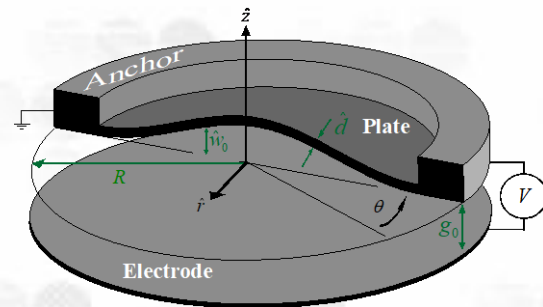


The Smart Structures Laboratory is recruiting students & postdocs

We study fundamental properties of a new class of structures dubbed as meta-structures, characterised by repeating unit sub-structures that are coupled together. This new type of structures is an emerging field with applications ranging from multi-stable MEMS to energy harvesting, mechanical computing, authentication and encryption.

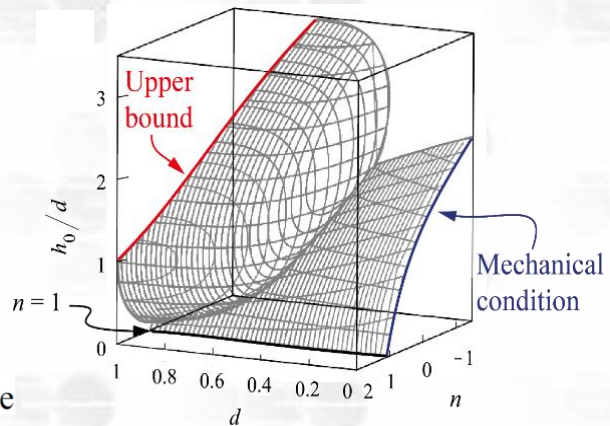


Electrostatically actuated curved microplate



— Stable — Unstable

Bistability condition



The research is aiming toward the following applications:

- Multi-bit non-volatile mechanical memories and MEMS-based sensors
- Authentication devices
- Multistable, broadband micro-energy harvesters
- Pseudo-random number generator
- Mechanical computing
- Fresnel mirrors

For further details and enquiries, contact Dr. Lior Medina at medina@tau.ac.il